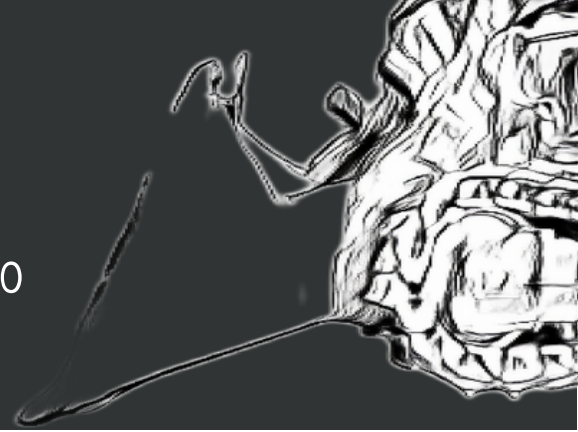




# EIMCO

## MUCK LOADER 630



### TECHNICAL SPECIFICATIONS

#### Eimco 630 Muck loader

UNDERGROUND LOADER MUCKING MACHINE

- Weight 4690 Kg
- Length 2850mm
- Width 1490mm
- Height 1510mm
- Bucket Capacity 0,39 cbm

#### Operation

- Drive: With compressed air
- Chassis: steel tracks crawler
- Operator: Manuel

### SPECIAL FEATURE

#### Flexible and quick to load

Operated from a pneumatic power source this Rockershovel use air to power its bucket which also has a mucking function to overload

- Emission-free work

#### The crawler tracks

Dozer tracks allow this machine to operate pretty much anywhere.

### THE 630 ROCKERSHOVEL

The 630 is a shaft sinking Rockershovel able to fill a kibble quickly and efficiently. Operating on dozer tracks this unit can operate at extreme angles and can manoeuvre quickly to ensure that loads can be carried to the kibble from anywhere

### CORE COMPETENCIES

- Without emissions
- Fast loading
- Low maintenance costs
- Robust Durable
- Easy to handle
- Easy handling

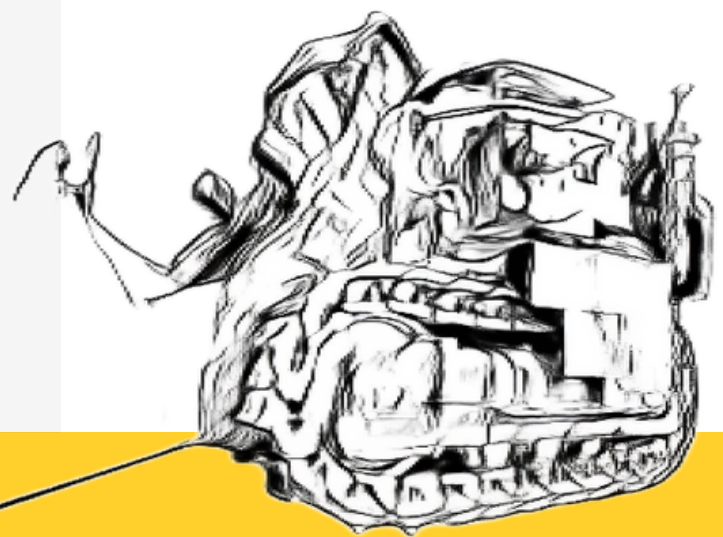
### CONTACT INFORMATION

Email:

Phone:

Website:

Dealer Address:



### EIMCO MINING EQUIPMENT

- Eimco mining machines have been specially developed for use underground.
- Distribution is via Eimco and Trident SA